



Announcements

Happy Holidays!

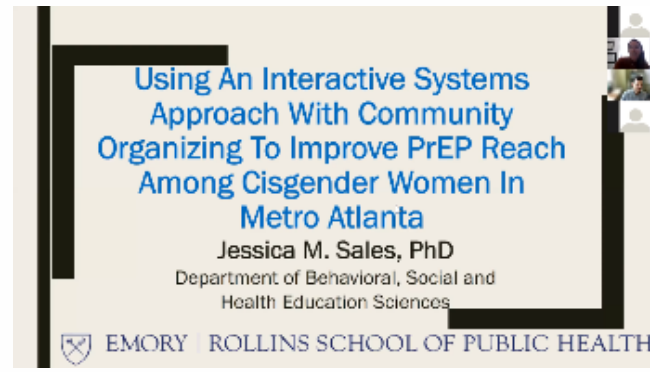
The [Network for Evaluation and Implementation Sciences at Emory \(NEISE\)](#) would like to wish everyone a happy holidays and new year!

CARE | Emory Collaboration now highlighted on the website

For more than 20 years, CARE USA and Emory University have collaborated across global health and development sectors. The vision of the CARE-Emory Collaboration is to jointly produce high-impact, policy-and programmatically-relevant applied research and learning to address global challenges to human development for transformative impact at scale. Learn more about the collaboration on our [website!](#)

NEISE events for next semester

We plan on hosting two [NEISE Speaker Series](#) during the spring semester as well as a networking event towards the end of the school year. Keep an eye out for announcements.



In case you missed it!

[Jessica Sales](#) presented work on using an interactive systems approach with community organizing to improve PrEP reach in our recent [NEISE Speaker Series](#).

[VIEW THE SEMINAR](#)



NEISE Research News

Grant Awards

- ["An Interactive Systems Approach to Ending the HIV Epidemic Among Women in Atlanta"](#) – NEISE contact: Jessica Sales (jmcderm@emory.edu), Anandi Sheth (ansheth@emory.edu), Funder: National Institute of Mental Health (NIMH)
- ["Implementation of the Functional Outcome Measures in Post-Acute Care Facilities"](#) – NEISE contact: Shilpa Krishnan (shilpa.krishnan@emory.edu), Funder: Learning Health Systems Rehabilitation Research Network Scholar

Publications

- On September 29th, the World Health Organization held a meeting on Collaborative Care to treat mental and physical health disorders together and highlighted work from [Dr. Mohammed Ali](#) and colleagues' NIMH-funded study as one of 5-6 exemplars of collaborative care implementation in low-and middle-income countries. Read the paper [here!](#)

Share your implementation research project or publication on our [project page](#)

[SHARE NEW AWARDS OR PUBLICATIONS](#)



Spotlight NEISE Member



[Amy Webb Girard, PhD](#)

Amy Webb Girard, PhD is an Associate Professor in the Hubert Department of Global Health at the Rollins School of Public Health. Amy's research, teaching, and service focus on the structural and social determinants of health applying a nutrition lens (both internationally in East Africa and in Atlanta). She is also attending nursing school to become a nurse practitioner, so she can learn to effectively expand programs that can support people within communities and build authentic relationships with communities.

Each newsletter we will randomly spotlight a NEISE member from [our network](#)

[BECOME A MEMBER](#)



Resources

Websites

- NIH - Implementation Science in Environmental Health: <https://www.niehs.nih.gov/research/supported/translational/implementation/index.cfm>
- NIH - National Cancer Institute Implementation Science: <https://cancercontrol.cancer.gov/is>
- NIH - Dissemination & Implementation Research: <https://www.prevention.nih.gov/research-priorities/dissemination-implementation>
- Dissemination & Implementation Models in Health Research & Practice: <https://dissemination-implementation.org/index.aspx>
- WHO - Implementation Research Training Materials: <https://www.who.int/tr/capacity/strengthening/ir-training/en/>

Webinars

- **November 30, 2021 (Recording)** - NIH Division of Cancer Control & Population Sciences: [Advancing Economic Evaluation in Implementation Studies: Multi-stakeholder Perspectives on Assessing Costs and Value?](#)
- **October 28, 2021 (Recording)** - NIH Division of Cancer Control & Population Sciences: [Past, Present, and Future of the Consortium for Cancer Implementation Science \(CCIS\)](#)

Events

- **February 28-March 1, 2022** - National Institute of Environmental Health Sciences: [Advancing Environmental Health Equity Through Implementation Science](#)

Share resources with our [email](#) or [listserv](#) and we will highlight them in the next [newsletter](#)

[GET INVOLVED!](#)

NEISE is a network that encourages interdisciplinary research opportunities to harness the intellectual resources of Emory University and Greater Atlanta to create solutions for sustainable and resilient communities, while enriching the faculty and student experience.

